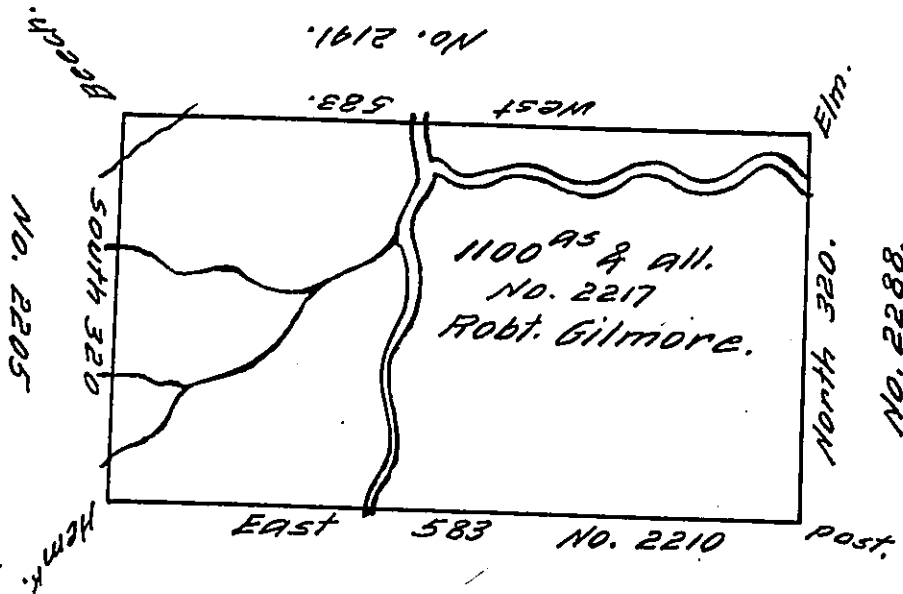


N. 99 N.



Situate on the Oswaye Creek about two Miles South of the State Line in Northd. County containing 1100 Acres and the usual allowance for Roads &c.

Surveyed June 19th 1793 for Robert Gilmore in pursuance of a warrant No. 2217 bearing date 12th December 1792.

John Canan.

Daniel Brodhead Esqr. S. G.

D. S.

IN TESTIMONY that the above is a copy of the original remaining on file in the Department of Internal Affairs of Pennsylvania, made conformably to an Act of Assembly approved the 16th day of February, 1833, I have hereunto set my Hand and caused the Seal of said Department to be affixed at Harrisburg, this seventh day of August 1911

Henry Houch
Secretary of Internal Affairs.